



## CROWNE PLAZA SYDNEY MACQUARIE PARK

7/11 Talavera Road  
North Ryde, NSW 2113, Australia

T +61 (02) 9491 9500

reservations@cpsmp.com.au



ACCOMMODATION,  
MEETINGS & EVENTS

**CROWNE PLAZA®**  
— BY IHG —

Sydney Macquarie Park



Crowne Plaza Sydney Macquarie Park

## WELCOME TO CROWNE PLAZA SYDNEY MACQUARIE PARK

Get ready to elevate your experience at Crowne Plaza Sydney Macquarie Park, where meetings and events transform into unforgettable experiences in one of Sydney's most vibrant business hubs.

Located in the heart of Macquarie Park, this dynamic area is home to major corporate offices, tech giants, and excellent retail and dining options. The hotel offers easy access to the city's top attractions like Sydney Harbour Bridge, Opera House, and Circular Quay are just 20 minutes metro ride away.

Crowne Plaza Sydney Macquarie Park offers a range of meeting and event spaces, including 6 versatile meeting rooms, dedicated boardrooms, and tailored catering options to make your event truly special. For those looking to host outdoor functions, the hotel features a beautiful courtyard area with Barbeque.

The hotel provides a modern and comfortable retreat with 196 guest rooms, including loft suites, double rooms, and balcony rooms, designed for both business and leisure travellers. Additional amenities include one on-site dining option, a fitness centre, and a complimentary shuttle bus to local corporate offices.

Whether you're visiting for work, relaxation, or exploration, you'll be ideally situated near Macquarie University, local shopping precincts, and attractions like Lane Cove National Park and North Ryde Golf Club.



## FUNCTION ROOM CAPACITIES

| Room Name            | Metres      | SQM | Theatre | U-Shape | Classroom | Boardroom | Banquet | Caberet |
|----------------------|-------------|-----|---------|---------|-----------|-----------|---------|---------|
| Denistone            | 3.6 x 4.9m  | 17  | -       | -       | -         | 8         | -       | -       |
| Eastwood             | 3.6 x 4.9m  | 17  | -       | -       | -         | 8         | -       | -       |
| Gladesville          | 5.4 x 6.6m  | 35  | 40      | 18      | 18        | 15        | 20      | 16      |
| Tennyson Point       | 3.8 x 5.4m  | 20  | 18      | 10      | 12        | 12        | 12      | 12      |
| Macquarie Park 1     | 6.3 x 5.6m  | 35  | 40      | 20      | 18        | 14        | 20      | 16      |
| Macquarie Park 2     | 6.3 x 5.6m  | 35  | 40      | 20      | 18        | 14        | 20      | 16      |
| Macquarie Park 1 & 2 | 13.1 x 5.6m | 73  | 90      | 36      | 36        | 36        | 56      | 36      |
| Meadowbank           | 3.6 x 7.8m  | 28  | 35      | 14      | 16        | 16        | -       | -       |

## FUNCTION ROOM SPACES

### MACQUARIE PARK 1

A versatile space suited to various meeting styles. Macquarie Park 1 is perfect for medium-sized conferences, training sessions, or seminars. It can be combined with the adjacent room for extra capacity.

### MACQUARIE PARK 2

Adjacent and identical to Macquarie Park 1. This room is perfect for medium-sized conferences, training sessions, or seminars. It can hold up to 90 people if combined with Macquarie Park 1.

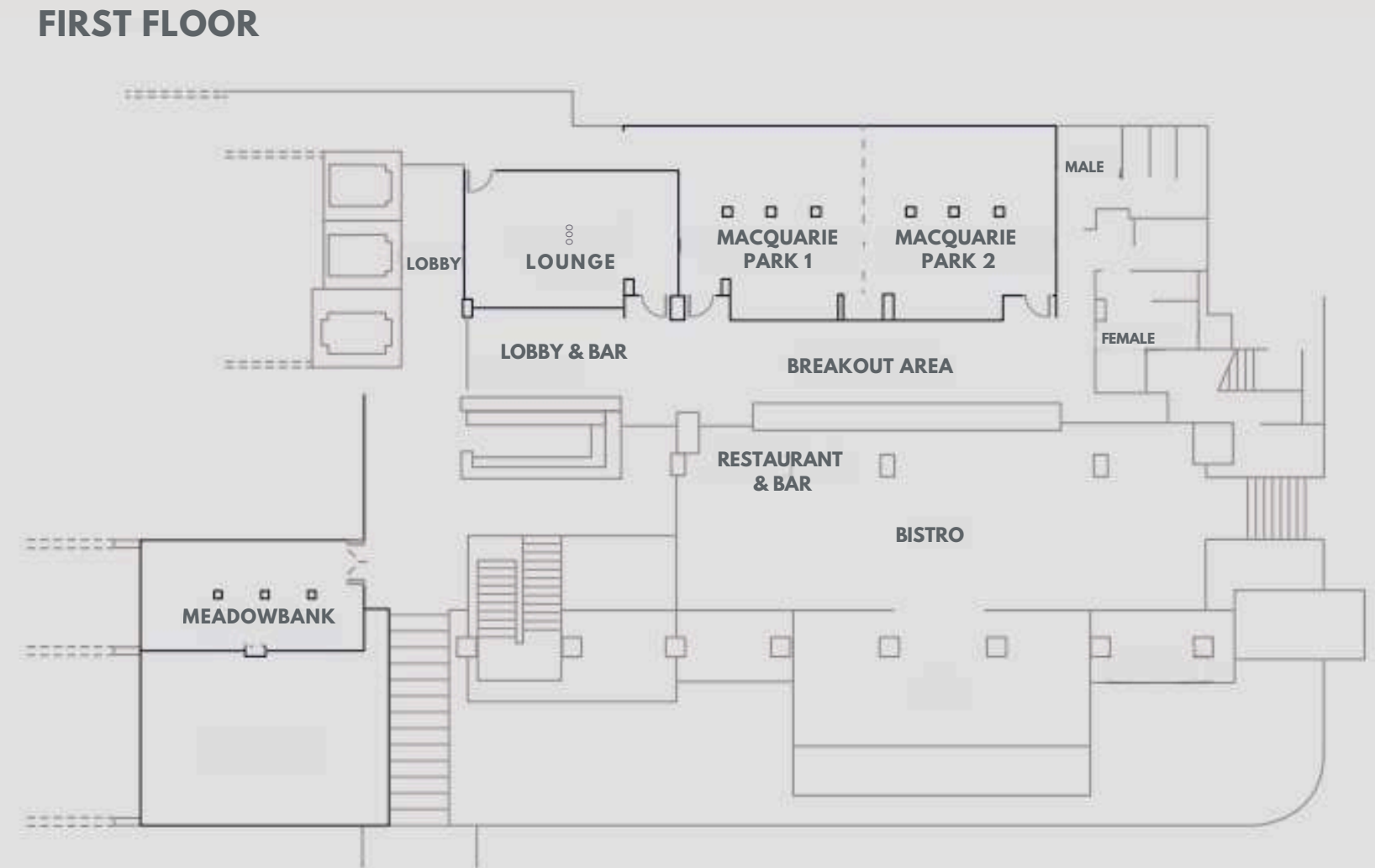
### MEADOWBANK

A flexible meeting room featuring floor-to-ceiling windows and plenty of natural light. The Boardroom is ideal for meetings & dinners, accommodating up to 16 people in a boardroom setup.

### BISTRO SYDNEY

Just right next to the bar, Bistro Sydney is perfect for cocktail style events, this space is open and if combined with outdoor dining area it can accommodate events up to 150 people.

## FIRST FLOOR PLAN



# FUNCTION ROOM SPACES

## DENISTONE

Perfect for intimate & small-sized meetings, Denistone Space can hold up to 8-10 people in Boardroom and 16 pax in theatre style.

## EASTWOOD

Identical to Denistone, Eastwood is perfect for small-sized meetings; this room features floor-to-ceiling windows that bathe the space in natural light, creating a warm and inviting atmosphere.

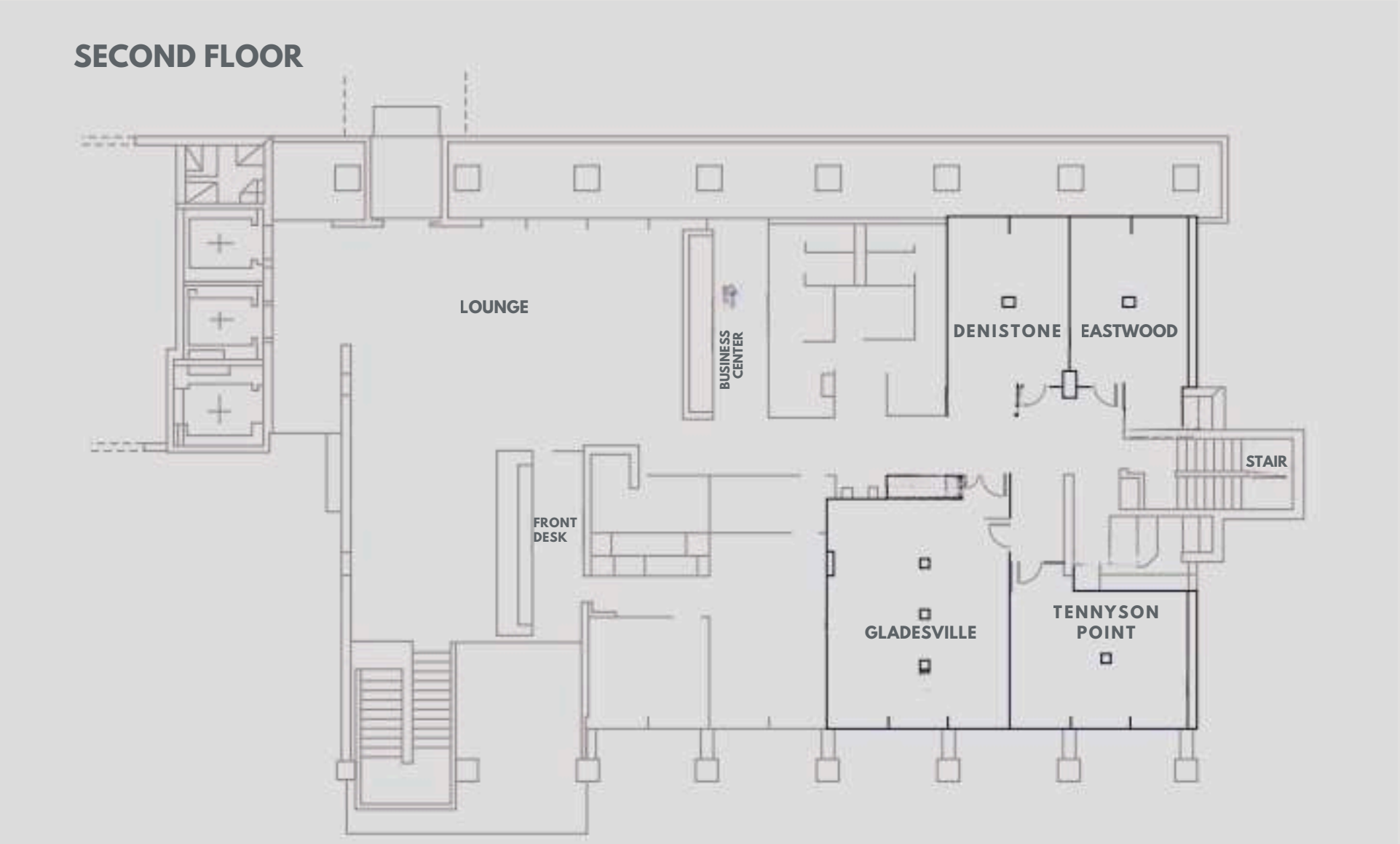
## GLADESVILLE

A flexible meeting room featuring floor-to-ceiling windows and plenty of natural light. It can fit up to 18 people in U-Shape style.

## TENNYSON POINT

Tennyson Point is ideal for intimate meetings, accommodating up to 12 people in a boardroom setup with a data projector and screen.

# SECOND FLOOR PLAN



# DAY DELEGATE PACKAGES



## FULL DAY DELEGATE PACKAGE

Welcome tea and coffee

Morning and afternoon tea – selection of teas, freshly filtered coffee & includes 2 refreshment items

Chef's selection gourmet lunch

Soft drinks, teas and coffees served with lunch

Complimentary whiteboard & flipchart

Complimentary Wi-Fi

Complimentary parking during event

## HALF DAY DELEGATE PACKAGE

Welcome tea and coffee

Morning or afternoon tea – selection of teas, freshly filtered coffee & includes 2 refreshment items

Chef's selection gourmet lunch

Soft drinks, teas and coffees served with lunch

Complimentary whiteboard & flipchart

Complimentary Wi-Fi

Complimentary parking during event

## TWO HOURS EXPRESS MEETING PACKAGE

Need a space for a quick catch-up or a productive short meeting? We've got you covered.

Our Express Meeting package is designed for efficiency and comfort, perfect for when time is of the essence

Enjoy a seamless experience with:

Chef's selection of a light food item on arrival

Chilled juice

Bottomless freshly brewed coffee and tea

NOTE: Restaurant may be shared with delegates from other conferences. Lunch timings may be staggered and there will be designated tables for your group.

# BANQUET BREAKFAST MENU

## SIGNATURE BREAKFAST

### MINIMUM 20 PEOPLE

Includes selection of tea, freshly brewed coffee and chilled orange juice

## SHARED COLD SELECTIONS

- Assorted morning bakery items including
- Butter croissants
- Danish pastries
- Assorted muffins
- Selection of jams and Australian honey
- Sliced seasonal fruit

## HOT SELECTIONS

Please select one of the following options:

- Smashed avocado on toast, feta, dukkha, and chilli
- Roasted mushrooms, pan-fried halloumi, herbed tomato, free-range scrambled eggs, salsa verde
- Toasted bagel with free-range scrambled eggs, smoked salmon, sour cream, and chives
- Free-range scrambled eggs, crispy bacon, sausage, hash brown, and roasted tomato
- Toasted English muffin with double-smoked ham, free-range poached eggs, hollandaise, and chives
- Two eggs sunny side up, crispy bacon, sausage, hash brown, and roasted tomato

## CONTINENTAL BREAKFAST

### MINIMUM 20 PEOPLE

## BEVERAGES

- Selection of premium teas
- Freshly brewed coffee
- Chilled orange juice

## COLD SELECTIONS

- Trio of freshly cut seasonal fruit
- Bircher muesli
- Two varieties of yoghurt
- Selection of cereals with full cream and skim milk
- Artisan cheese platter with accompaniments

## FROM THE BAKERY

- Assorted morning bakery items including
- Butter croissants
- Danish pastries
- Assorted muffins
- Selection of jams and Australian honey

# BANQUET BREAKFAST MENU

## FULL BUFFET BREAKFAST

MINIMUM 20 PEOPLE

### COLD SELECTIONS

- Assorted morning bakery items including
- Butter croissants
- Danish pastries
- Assorted muffins
- Selection of jams and Australian honey
- A trio of freshly cut seasonal fruit

### HOT SELECTION

- Free-range scrambled eggs
- Smoked streaky bacon
- Grilled chicken and thyme sausages
- Thyme-infused mushrooms and spinach
- Oven-roasted herb tomatoes
- Golden hash browns

### BEVERAGES

- Selection of premium teas
- Freshly brewed coffee
- Chilled orange juice

## BREAKFAST CANAPES

Perfect for standing breakfasts, networking events, or light morning meetings.

### SAVOURY SELECTIONS

- Smoked salmon mini bagels with capers, cream cheese, and pickled shallot
- Smashed avocado on sourdough toast with feta and chilli
- Mini breakfast wraps with egg, hash brown, spinach, and BBQ sauce
- Ham and Swiss cheese croissants

### SWEET SELECTIONS

- Freshly baked scones with jam and cream
- Individual fruit salad bowls
- Individual yoghurt and muesli bowls

### BEVERAGES

- Selection of premium teas
- Freshly brewed coffee
- Chilled orange juice

# SIGNATURE BANQUET DINNER MENU



MINIMUM 20 PEOPLE  
Available as 2 or 3 course option.

## ENTRÉE (PLEASE SELECT ONE FROM THE FOLLOWING OPTIONS)

- Sichuan pepper calamari, lemon aioli
- Citrus-cured Atlantic salmon, shaved fennel
- Mushroom arancini, aioli, parmesan (VG)
- Spinach and ricotta ravioli, asparagus, sage butter (VG)
- Heirloom tomato salad, crumbed buffalo mozzarella, balsamic and basil (VG)

## MAIN (PLEASE SELECT ONE FROM THE FOLLOWING OPTIONS)

- Pan-fried Cone Bay barramundi, cauliflower purée, asparagus, kipfler potatoes, capers (GF)
- Roasted Atlantic salmon, French-style peas, clams, beurre blanc (GF)
- Roast chicken breast, wild mushroom risotto, asparagus, jus (GF)
- Lamb rump (200g), Paris mash, red wine jus
- Rangers Valley scotch fillet steak (250g), Paris mash, red wine jus

## DESSERT (PLEASE SELECT ONE FROM THE FOLLOWING OPTIONS)

- Warm chocolate fondant, vanilla ice cream
- Mango and passionfruit panna cotta (V)
- Pavlova with berries, cream and passionfruit
- Classic tiramisu
- Local artisan cheese, quince paste, dried fruits, lavosh (Signature)

## BBQ MENU ONE

MINIMUM 20 PEOPLE

### FOR STARTERS

- Watermelon, feta, and balsamic salad
- Roasted kumara, carrot, and walnut salad with orange dressing
- Garden salad with house vinaigrette
- Selection of condiments
- Assorted bread basket with butter and cream cheese spread

### FROM THE GRILL

- Vietnamese-style lemongrass grilled chicken
- Flank steak
- Tamari-glazed vegetable and tofu skewers (V, GF)
- Classic jacket potatoes with condiments

### CONDIMENTS

- Mustard, tomato ketchup, BBQ sauce
- Sauerkraut, steak sauce, sour cream

### DESSERTS

- Chef's selection of two seasonal desserts
- Tropical fruit salad

## BBQ MENU TWO

MINIMUM 20 PEOPLE

### FOR STARTERS

- Green bean and asparagus salad
- Roasted pumpkin and spinach with feta
- Avocado and heirloom tomato salad
- Greek salad bar selections
- Selection of condiments
- Assorted bread basket with butter and cream cheese spread

### FROM THE GRILL

- Cajun-style chicken
- Flank steak
- Grilled barramundi with chimichurri
- Grilled king prawns with garlic and Provençal herbs
- Corn on the cob
- Halloumi with wild mushrooms (V)
- Classic jacket potatoes with condiments

### CONDIMENTS

- Garlic mayonnaise, Chilli sauce
- Sour cream
- Coriander lime & chilli dressing, Chardonnay dressing

### DESSERT

- Chef's selection of three seasonal desserts
- Tropical fruit salad

# CANAPÉ PACKAGES



## CANAPÉS MENU

Available with a choice of 4,6 or 8 items

MINIMUM 20 PEOPLE

## COLD CANAPÉS

- Sydney Rock oysters with mignonette and lemon
- Chicken and glass noodle rice paper rolls (GF)
- Cured salmon tartare with sour cream and capers
- Heirloom tomato and goat's curd tart
- Vegetable rice paper rolls (GF, VG)
- Assorted sushi platter

## HOT CANAPÉS

- Salt and pepper squid with sweet chilli mayo
- Shrimp twisters with sweet chilli sauce
- Chicken satay skewers with peanut sauce
- Lamb kebabs with mint sauce
- Wild mushroom arancini (GF)
- Assorted sushi platter (VG)

## SUBSTANTIAL OPTIONS

- Wagyu beef sliders
- Sticky pork bao with pickled cucumber
- Tempura whiting taco with avocado and pica de gallo
- Vegetable Hokkien noodles
- Mac N Cheese sliders

## DESSERT CANAPÉS

- Lemon meringue tartlets
- Assorted macarons
- Chocolate mousse cornets
- Fresh fruit tartlets
- Mango cheesecake bites
- Mud cake with strawberry

# BEVERAGE PACKAGES



## CLASSIC BEVERAGE PACKAGE

Available for 1, 2 or 3 hours duration

### WINES

- Willoughlen Chardonnay
- Willoughlen Shiraz Cabernet
- Willoughlen Brut Cuvée

### BEERS

- Cascade Light
- Pure Blonde
- Carlton Dry
- Great Northern

## DELUXE BEVERAGE PACKAGE

Available for 1, 2 or 3 hours duration

### WINES

- Jansz Premium Cuvée
- Jim Barry Riesling
- Oyster Bay Sauvignon Blanc
- Pepper Jack Shiraz

### BEERS

- James Boags Light
- Corona
- Stella Artois
- Stone & Wood

All beverage packages includes soft drink and juices

# GROUP ACCOMMODATION

Need accommodation? Relax and unwind, knowing we've got your perfect night's sleep covered.

## ACCOMMODATION

196 Accommodation Rooms

We offer a diverse array of accommodations—from accessible options and high-floor rooms with stunning vistas to luxurious bi-level suites—ensuring every guest finds their perfect retreat.

## FACILITIES



Parking & Shuttle Service for local corporate guests



Fitness Centre



Business Centre



Bistro & Bar



24 hours In-Room Dining



Accessible Guest Rooms





Crowne Plaza Sydney Macquarie Park

## WHY CHOOSE CROWNE PLAZA SYDNEY MACQUARIE PARK

Located in a vibrant business hub with a tranquil park setting, Crowne Plaza Sydney Macquarie Park is ideal for meetings and events. From small gatherings and board meetings to seminars and memorable receptions, we tailor every event to your needs, ensuring a seamless and successful experience.

 DINING & DRINKS

Effortlessly transition from work to play with a range of catering options, from plated lunches to delectable canapés and seasonal buffets, followed by celebratory post-event drinks at the inviting Bistro on level one.

 MULTI-FLEXIBLE SPACES

6 event spaces with versatile setups for various group sizes.

 ON-SITE EVENTS EXPERTS

A dedicated on-site events team, featuring expert managers, attentive service staff, AV technicians, and a skilled culinary team.

 FREE LOYALTY PROGRAMME

From meetings and conferences to weddings and social events, we understand the work that goes into planning and we think all your bookings are important, so we reward you no matter the size with our IHG Business Rewards programme.

 GUEST ROOMS

Experience ultimate comfort, ample space, serenity, and a selection of views.

 CATERING & OUTDOOR BBQ

Tailored full-day & half-day delegate packages and outdoor dining and barbecue areas for private functions, plus breakout spaces for refreshment.

 BETTER CONNECTED

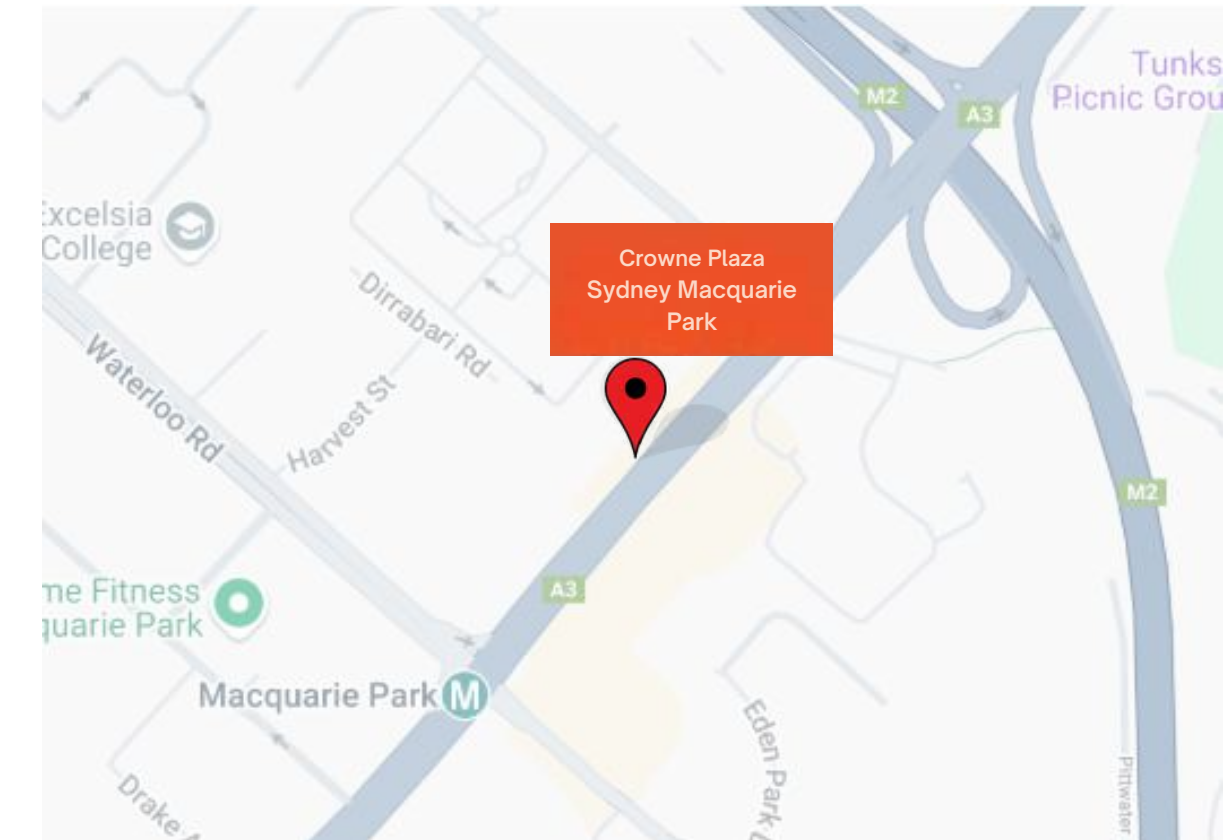
Complimentary high-speed Wi-Fi and advanced built-in AV technology with multi-room connectivity, enabling hybrid and virtual events across multiple platforms.



Crowne Plaza Sydney Macquarie Park

## OUR LOCATION

- Distance from airport: 29km
- Distance from Sydney CBD: 16km
- Macquarie Park Metro: 120m
- Macquarie Centre Shopping Mall – 800m
- Macquarie University – 1.2km
- Lane Cove National Park – 4.5km
- North Ryde Golf Club – 4.7km
- Chatswood Shopping Centre – 5.5km
- Sydney Olympic Park – 9.0km
- Ryde Aquatic Leisure Centre – 9.2km
- Circular Quay and Sydney Opera House – 18km





InterContinental Fiji Golf Resort & Spa

## IHG BUSINESS REWARDS



Not all heroes wear capes and you are definitely one of them. We believe in celebrating you – the unsung hero who quietly orchestrate seamless accommodations and coordinate impactful meetings and events for others.

Earn 3 points for every \$1 USD spent on qualifying bookings, with the flexibility to use these rewards towards corporate benefits or add them to your personal account. No catch, no booking threshold, and no minimum qualifying spend – just a straightforward acknowledgment of your hard work.



### Earn points

3 points for every \$1 USD spent on accommodations, meetings and/or events.



### Loyalty benefits

Earn Elite status and redeem points for stays, merchandise from the IHG One Rewards catalogue, and more.



### Hotel choices

Nearly 6,000 participating hotels worldwide.



### Manage just one account

One membership number manages your IHG Business Rewards and IHG One Rewards activity.

# JOURNEY TO TOMORROW

## IHG'S 10-YEAR RESPONSIBLE BUSINESS PLAN

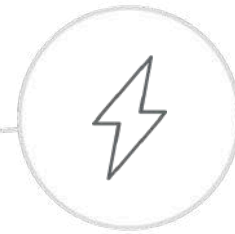
Our goal is to help shape the future of responsible travel together with those who stay, work and partner with us. We will support our people and make a positive difference to local communities, while preserving our planet's beauty and diversity...not just today but long into the future.



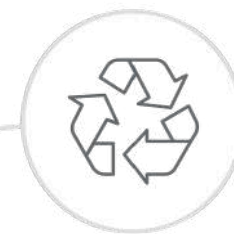
Champion a diverse culture where everyone can thrive.



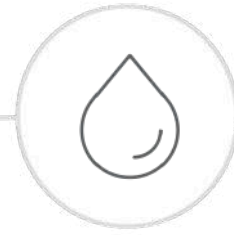
Improve the lives of 30 million people in our communities around the world.



Reduce our energy use and carbon emissions in line with climate science.



Pioneer the transformation to a minimal waste hospitality industry.



Conserve water and help secure water access in those areas at greatest risk.

### OUR PEOPLE



Champion a diverse culture where everyone can thrive.

Drive gender balance and a doubling of under represented groups across our leadership. Cultivate an inclusive culture for our colleagues, owners and suppliers. Support all colleagues to prioritise their wellbeing and the wellbeing of others. Drive respect for and advance human rights. Improve the lives of 30 million people in our communities around the world.

### COMMUNITIES



Improve the lives of 30 million people in our communities around the world.

Drive economic and social change through skills training and innovation. Support our communities when natural disasters strike Collaborate to aid those facing food poverty Reduce our energy use and carbon emissions in line with climate science.

### ENERGIES & CARBON



Reduce our energy use and carbon emissions in line with climate science.

Implement a 2030 science- based target that delivers 46% absolute reduction in carbon dioxide emissions from our owned, leased, managed and franchised hotels. Target 100% new build hotels Maximise/optimize the role to operate at very low/zero carbon emissions by 2030. of renewable energy. Pioneer the transformation to a minimal waste hospitality industry

### WASTE



Pioneer the transformation to a minimal waste hospitality industry.

Eliminate single use items, or move to reusable or recyclable alternatives across the guest stay. Minimise food going to waste through a "prevent, donate, divert" plan. Collaborate to achieve circular solutions for major hotel commodity items.

### WATER



Conserve water and help secure water access in those areas at greatest risk.

Implement tools to reduce the water footprint of our hotels. Mitigate water risk through stakeholder collaboration to deliver water stewardship at basin level. Collaborate to ensure adequate water, sanitation, and hygiene (WASH). conditions for our operating communities